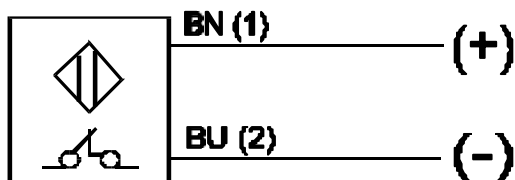


OSNA NAMUR Proximity Switches have been approved by BUREAU VERITAS as per Certificate No. EPS 16 ATEX 1 047  II 2G Ex ia IIC T4 Gb for Intrinsic Safety.

These Switches can be installed in a Hazardous Area Gas Group IIC and connected through a Isolation Trip Amplifier.

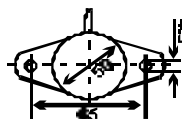
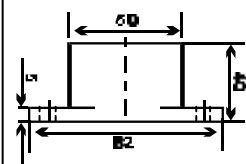
For Example : OSNA OS-Ex-2G also certified as Intrinsic Safe by BUREAU VERITAS.

CONNECTION DIAGRAMS



PVC Cable
IP-68 Protection

Sensing Range
25 mm



CE

Supply Voltage

8 VDC

Mounting

Non Flush

Current Consumption

(A) Active Face Free

$\geq 3\text{mA}$

(B) Active Face Covered

$\leq 1\text{mA}$

Intrinsic Capacitance

157nF

Intrinsic Inductance

107mH

Switching Frequency

250Hz

Switching Hysteresis

3%

Standard Target(Ferrous)

75x75x1

Cable (Cross Section)

0.75mm²

Ordering Chart

METAL HOUSING

SYNTHETIC HOUSING

NJ 25-50-N

ART. NO. : (SIN019S2)